

Rising Star Breakfast  
May 9, 2006

*Sustaining Hartford's Renaissance:*  
Benefiting the Region's Growth

Ken Greenberg  
Greenberg Consultants Inc.



Positive time for City-Building



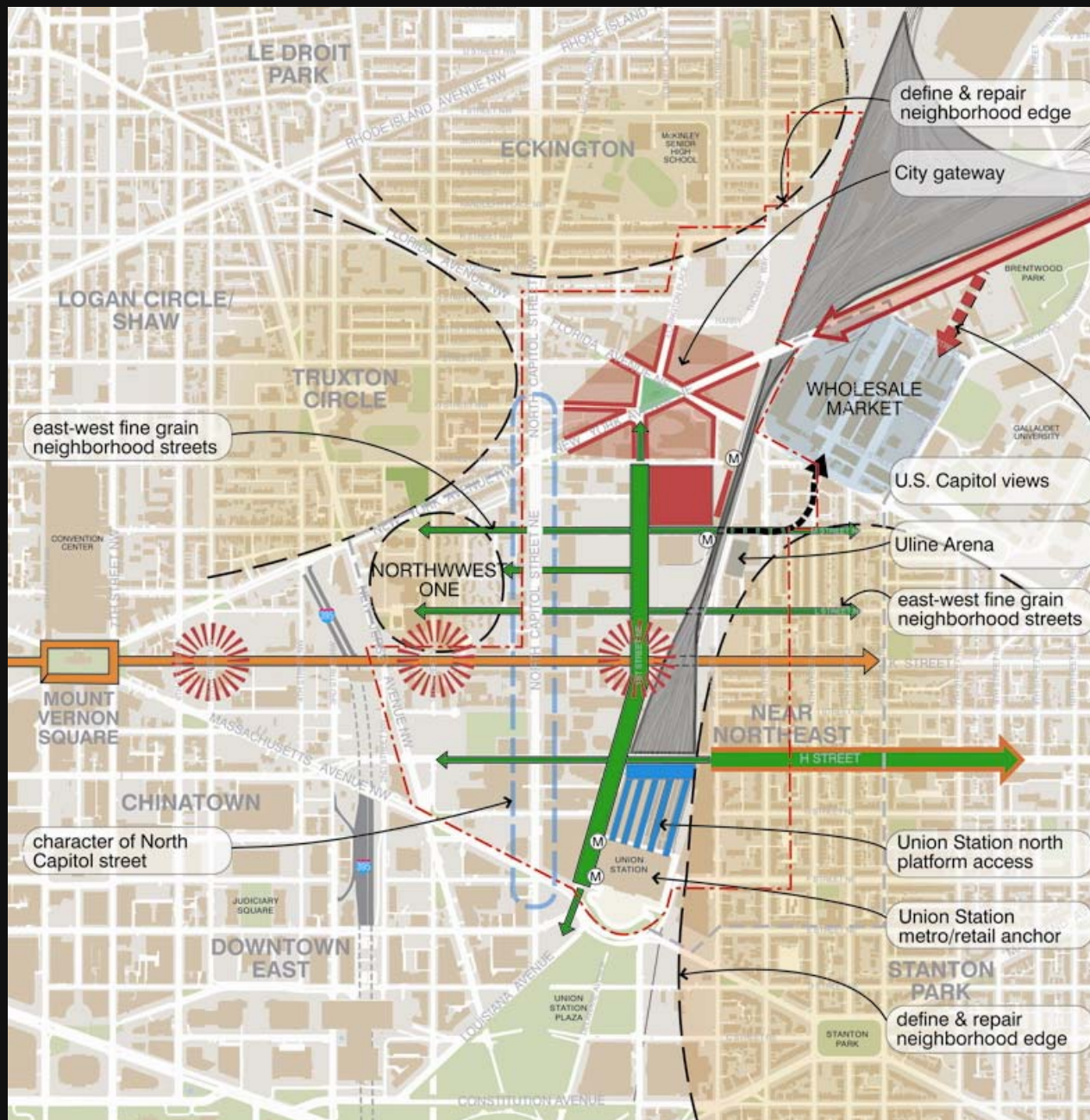
Quality of life is key economic asset





Critical ability to assemble the pieces





Value of Strategic Vision and Framework





Special role of Leadership



## Hartford 2010: A Vision and Strategic Framework

- Strategic Collaboration – City and the Alliance
- Build on considerable accomplishments
- Long term vision for the whole City
- Overall Strategic Framework based on shared values
- Integrated Land Use, Transportation, Environmental and Urban Design Strategies
- Targeted recommendations

## Hartford 2010: A Team Effort

- David Nagahiro and Ki shore Varanasi - CBT
- Fred Gorove – Gorove Slade
- Andrew Gutterman – Michael Van Valkenburgh
- Ken Bowers – Phillips Preiss Shapiro
- Patrick Pinnell
- City of Hartford and Alliance staff



Examples of Success

' CROSSROADS' Initiative  
Boston, MA

Expanding Common Ground



# Leveraging The 'Big Dig'







... as the City fills in and re-  
orients to the water

The 'Rose Kennedy Greenway' – Unique social role; Power of the Space to reveal and re-connect the City





# New North End Parks

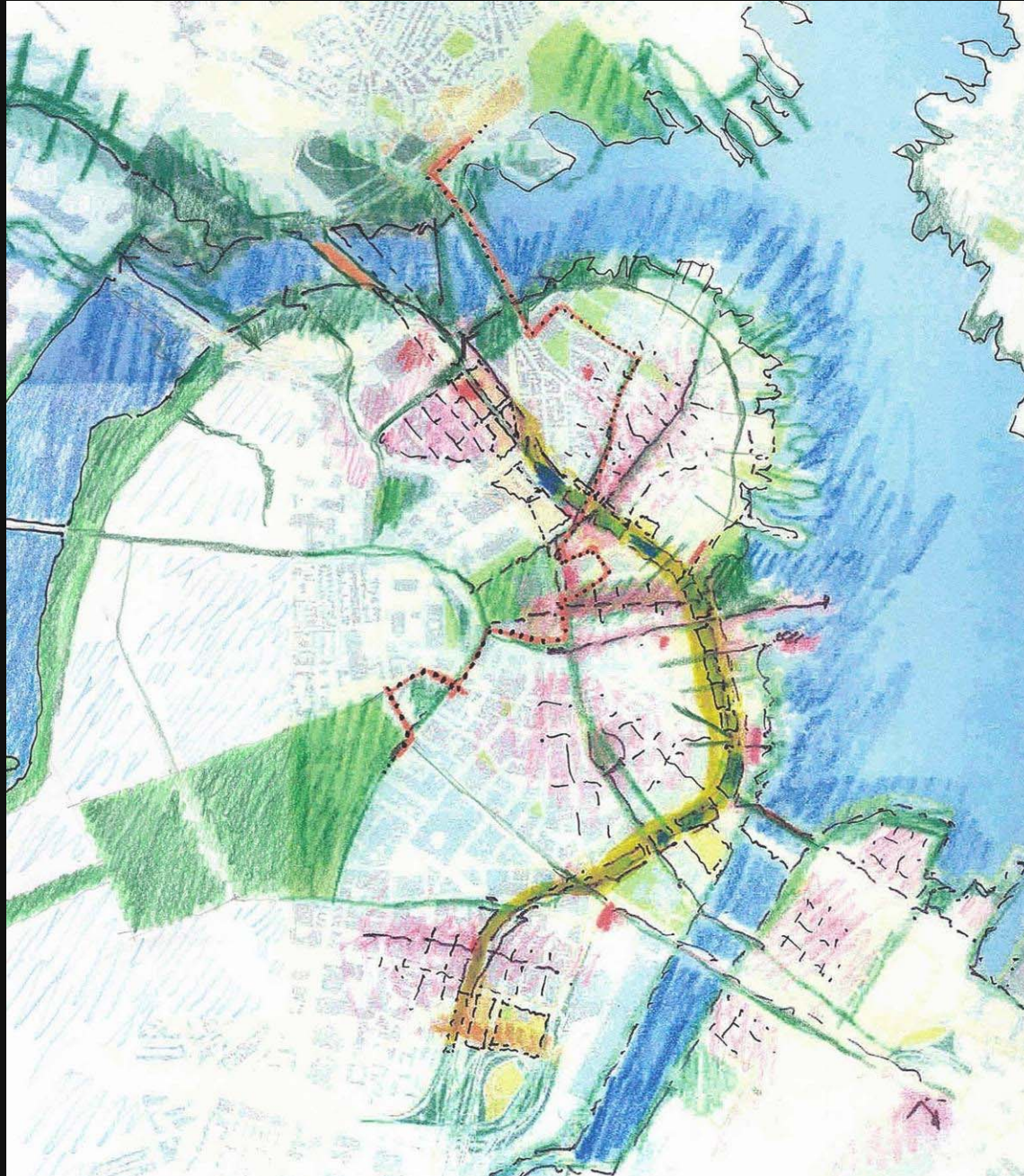


## SUDBURY STREET LOOKING SOUTH

The North End Parks, part of the Rose Kennedy Greenway, are a portion of the more than 300 acres of landscaped open space created by the Central Artery/Tunnel Project. The Greenway, with 14 parks running from Causeway Street to Kneeland Street, is the final piece of the CA/T Project and will replace the elevated John F. Fitzgerald Expressway that was built through downtown Boston in the 1950s.



# THE NEXT OPPORTUNITY - an expanded web of connections





Using the momentum of change to forge  
a new shared identity

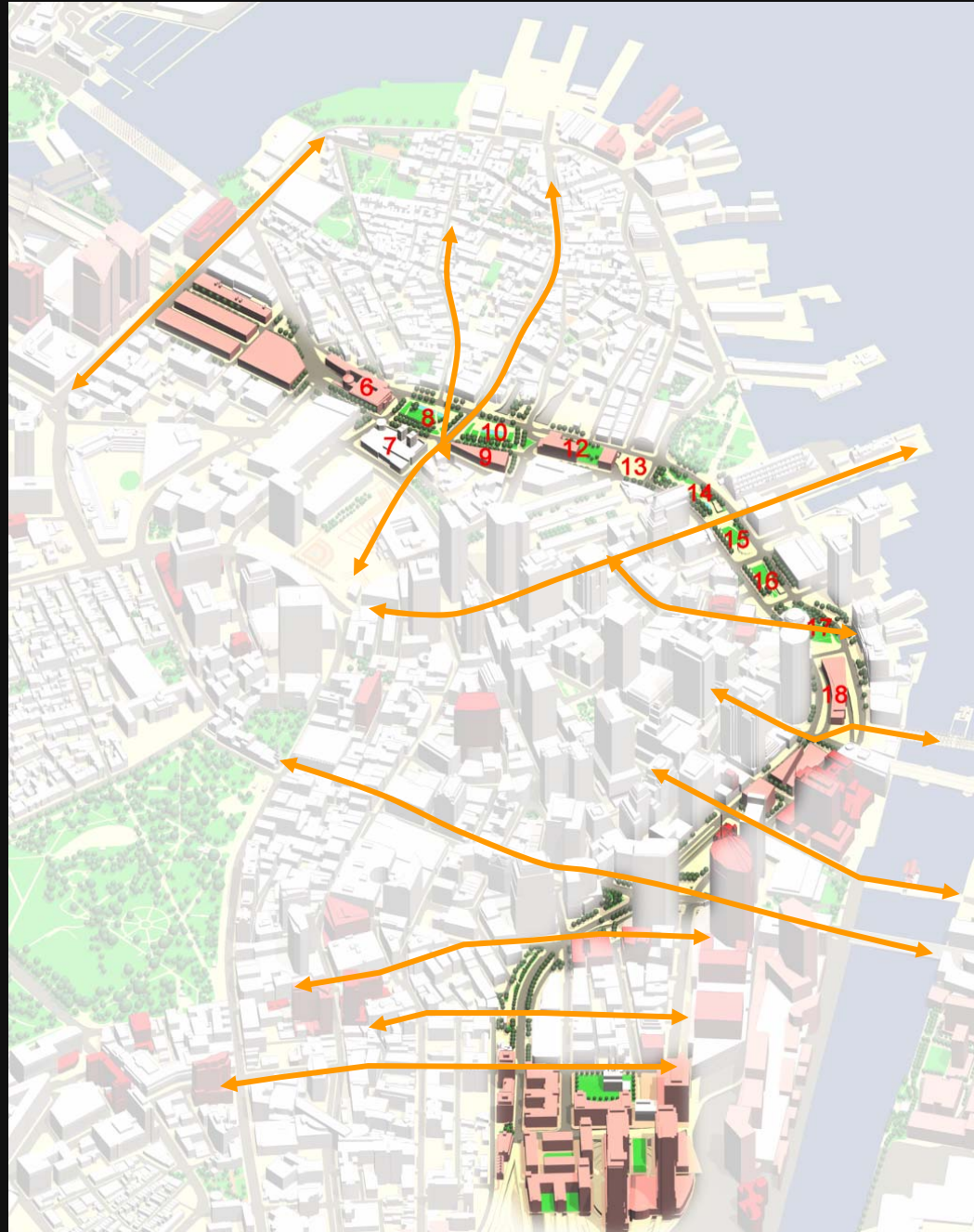




## BOSTON 'CROSSROADS'

Once-in-a-century opportunity to forge new *Common Ground*:

- A Web of connections building off the Greenway
- Connects neighborhoods, cultural destinations, parks, water's edge
- Gateways and thresholds
- Greenway Parks to support vibrant year-round use
- Public/ private initiatives



# 21<sup>st</sup> Century Streets



## Pedestrian Comfort





# 21<sup>st</sup> Century Streets



Inviting to Everyone





# 21<sup>st</sup> Century Streets

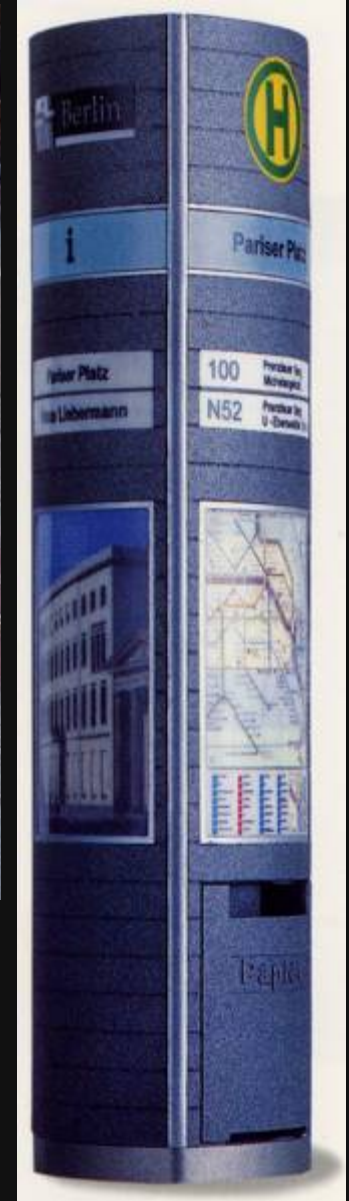


Fl exi bl e





# 21<sup>st</sup> Century Streets



Understandabl e

# 21<sup>st</sup> Century Streets



# Seamless Environment





# 21<sup>st</sup> Century Streets



Sustainable



# 21<sup>st</sup> Century Streets

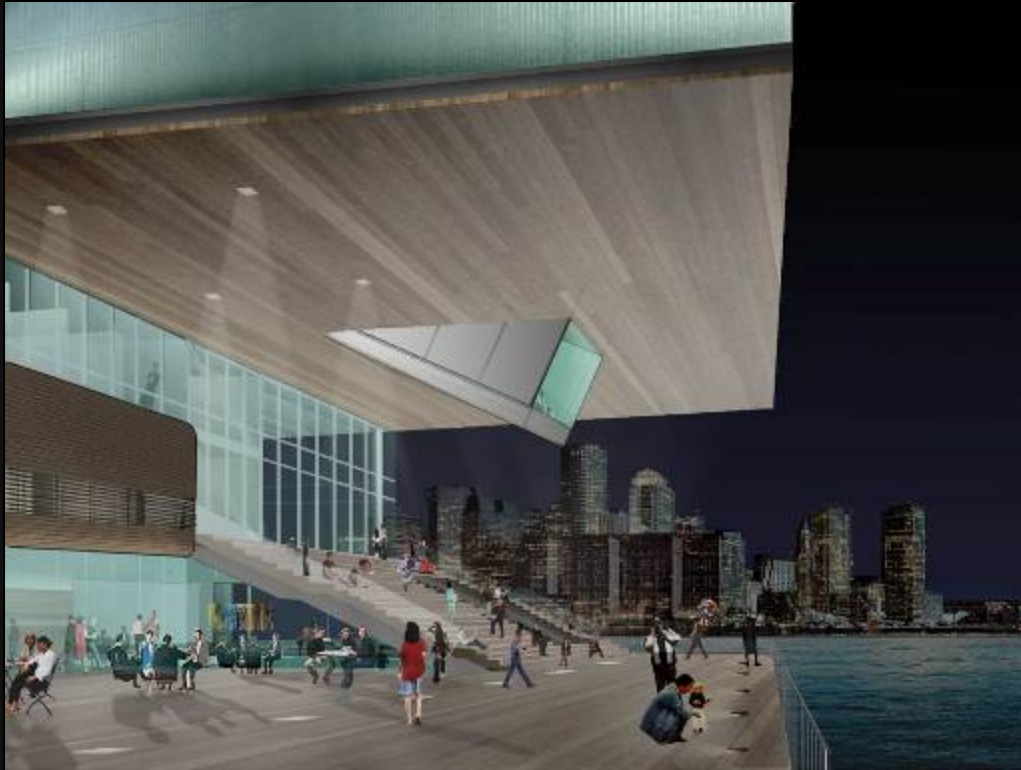


Utilizes new technology





# 21<sup>st</sup> Century Streets



A contemporary Image





# 21<sup>st</sup> Century Streets



Place for the Arts





# Intersection of STATE AND CONGRESS Today





# STATE AND CONGRESS as Crossroads





BROAD STREET - Looking East Today





BROAD STREET - Eastbound as Crossroads





PHILLIPS SQUARE, ESSEX STREET Today





# PHILLIPS SQUARE as Crossroads





Beyond the Big Dig  
Ken Greenberg hired

Mayor announces "Crossroads Initiative"  
Twelve Streets chosen

Technical Feasibility Study

Design Palette

Broad

Summer and Congress  
Causeway

Next Streets

CONCEPT

SCOPING

DESIGN &  
CONSTRUCTION

2003

2004

2005

2006

2007

Seize the opportunity with a catalytic initiative



Re-focus on the Whole Place through Unifying Elements which support vibrant, year-round use, bring out its unique spatial character, and re-connect the City



Examples of Success

# Downtown Hartford Action Strategy 1998

Strategic Reinvestment

## Hartford 2010: Starting Points

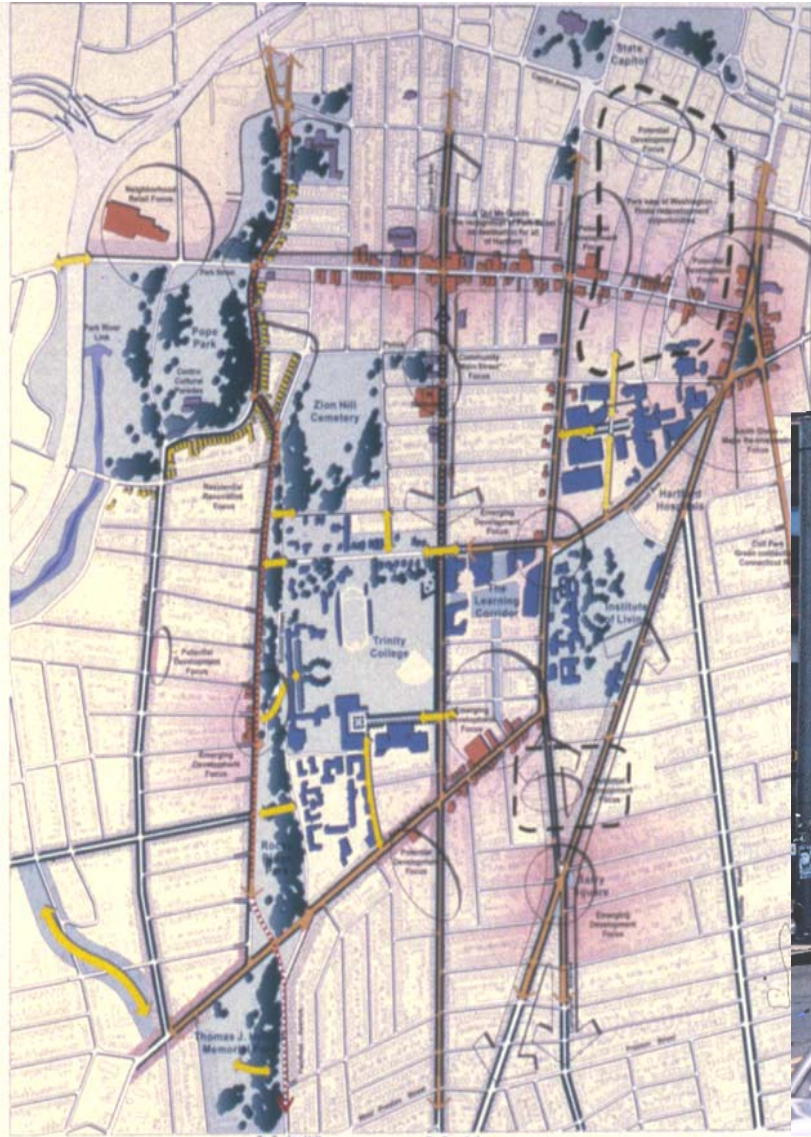
- Examples of Success
- Latent Potentials & Plans
- Stock-taking – what worked, what didn't
- Opportunities to accomplish multiple goals
- Accelerate positive change
- Targeted recommendations – Hartford solutions







# Trinity College & SINA Neighborhoods



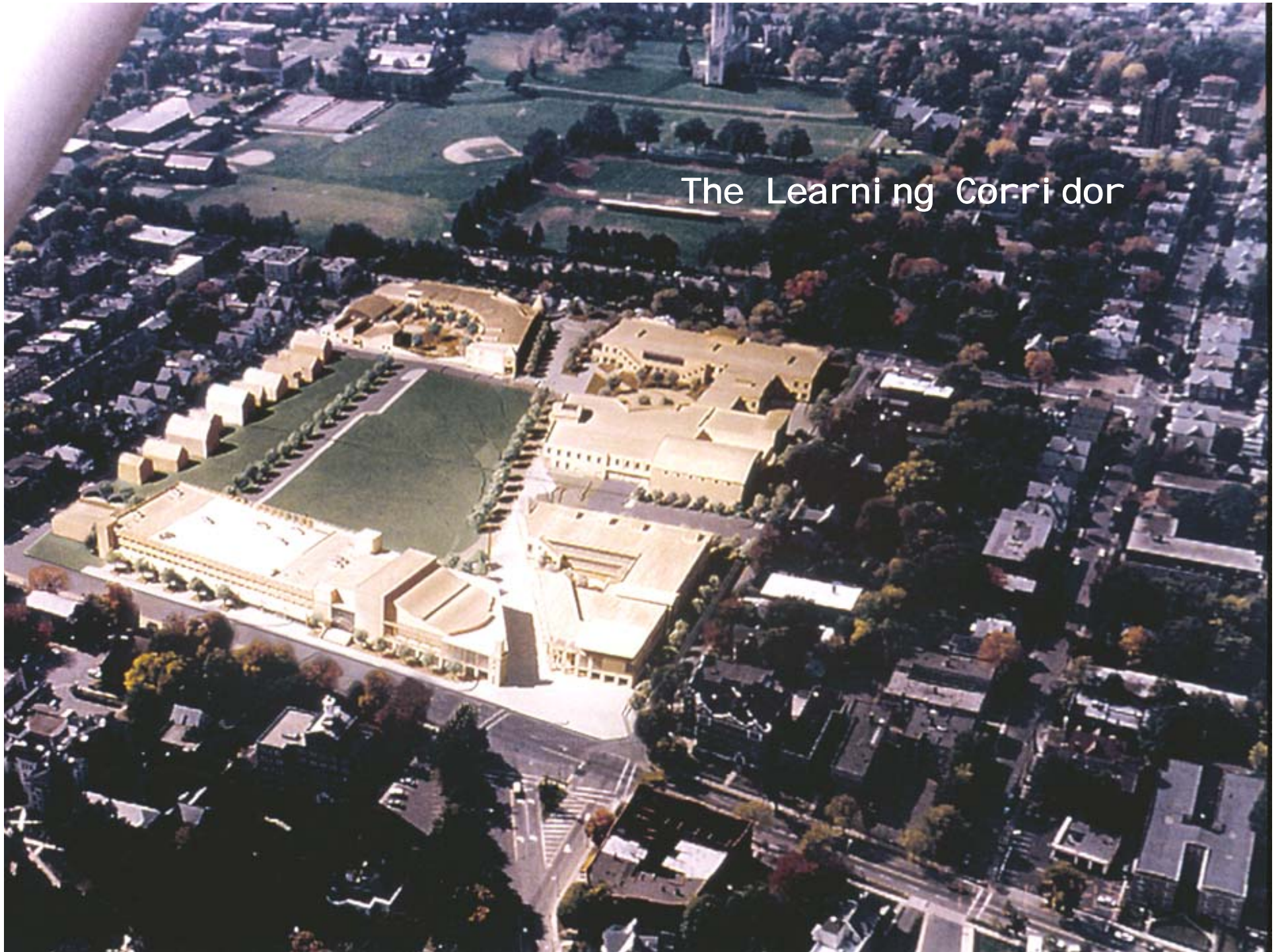
**STRUCTURE PLAN**  
**SINA NEIGHBORHOODS**  
Hartford · Connecticut

- Street edge reinforcement and sidewalk
- Connections and pathways
- Key transit or mobility connections
- Key pedestrian connections
- Proposed bike route
- Neighborhood focus

0 100 400 1,000 Feet

Berridge Lewinberg Greenberg Dark Gabor Limited





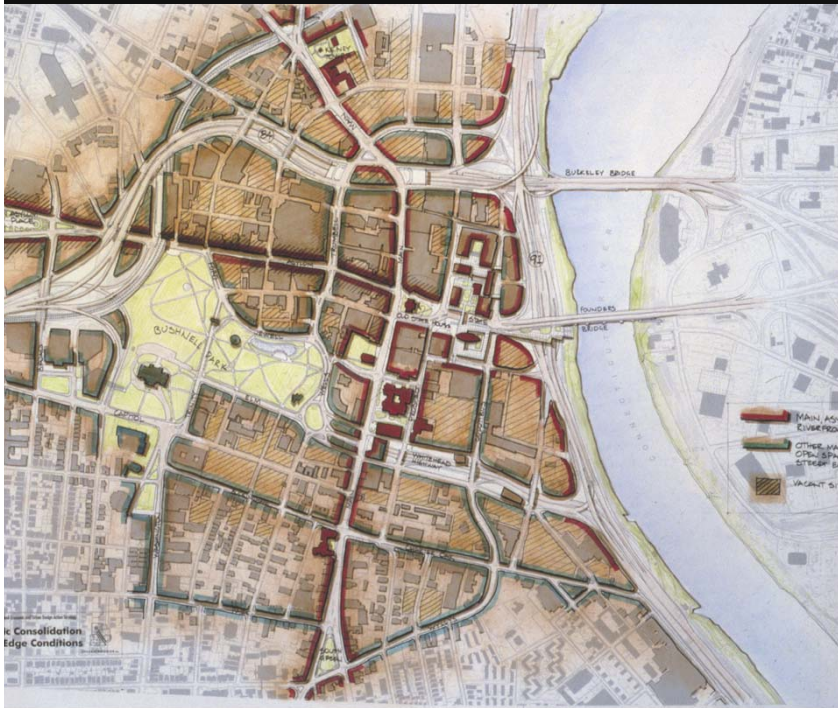
The Learning Corridor







# Bui l di ng around Bushnel l Park





# Strategic Insertions of new residential

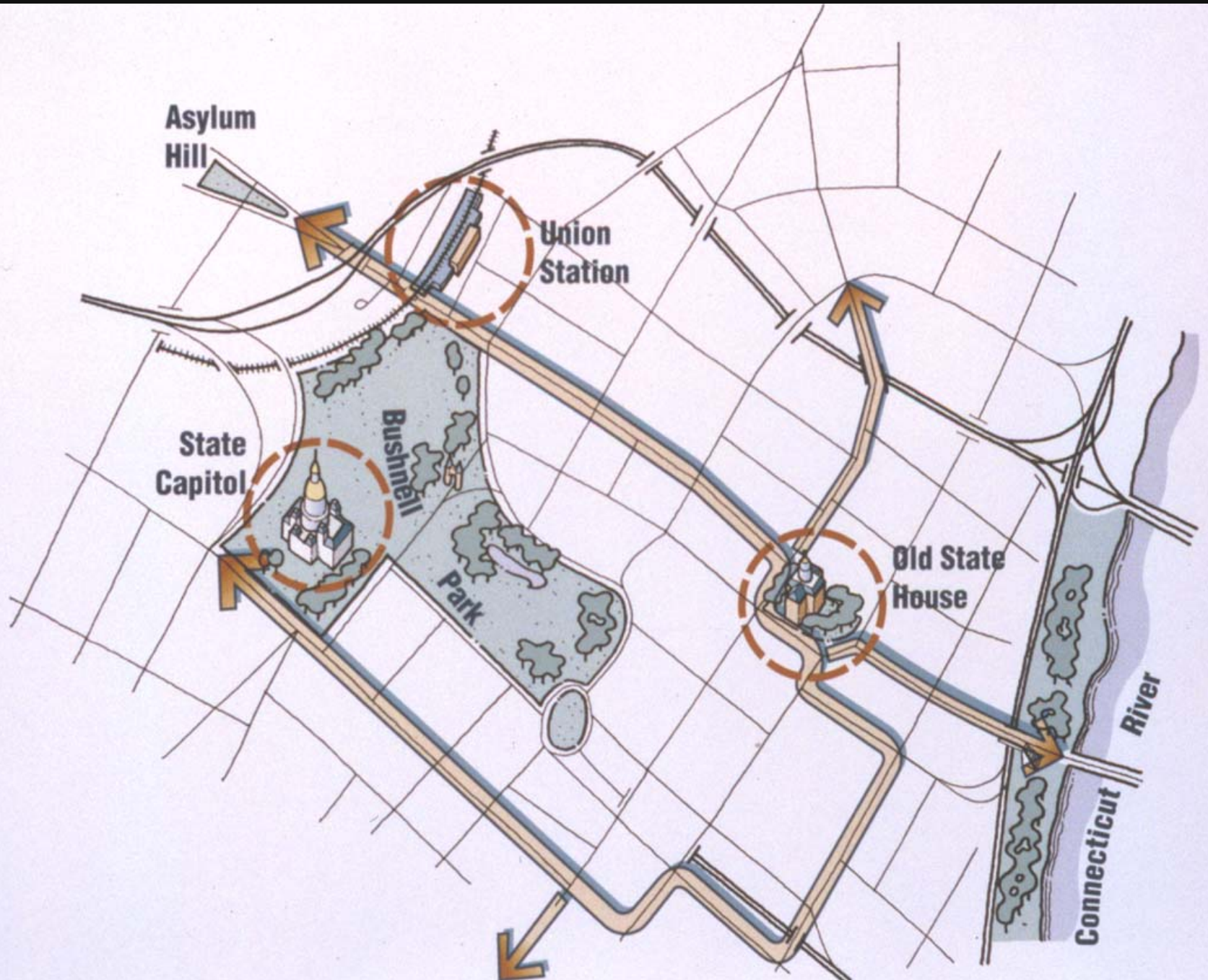




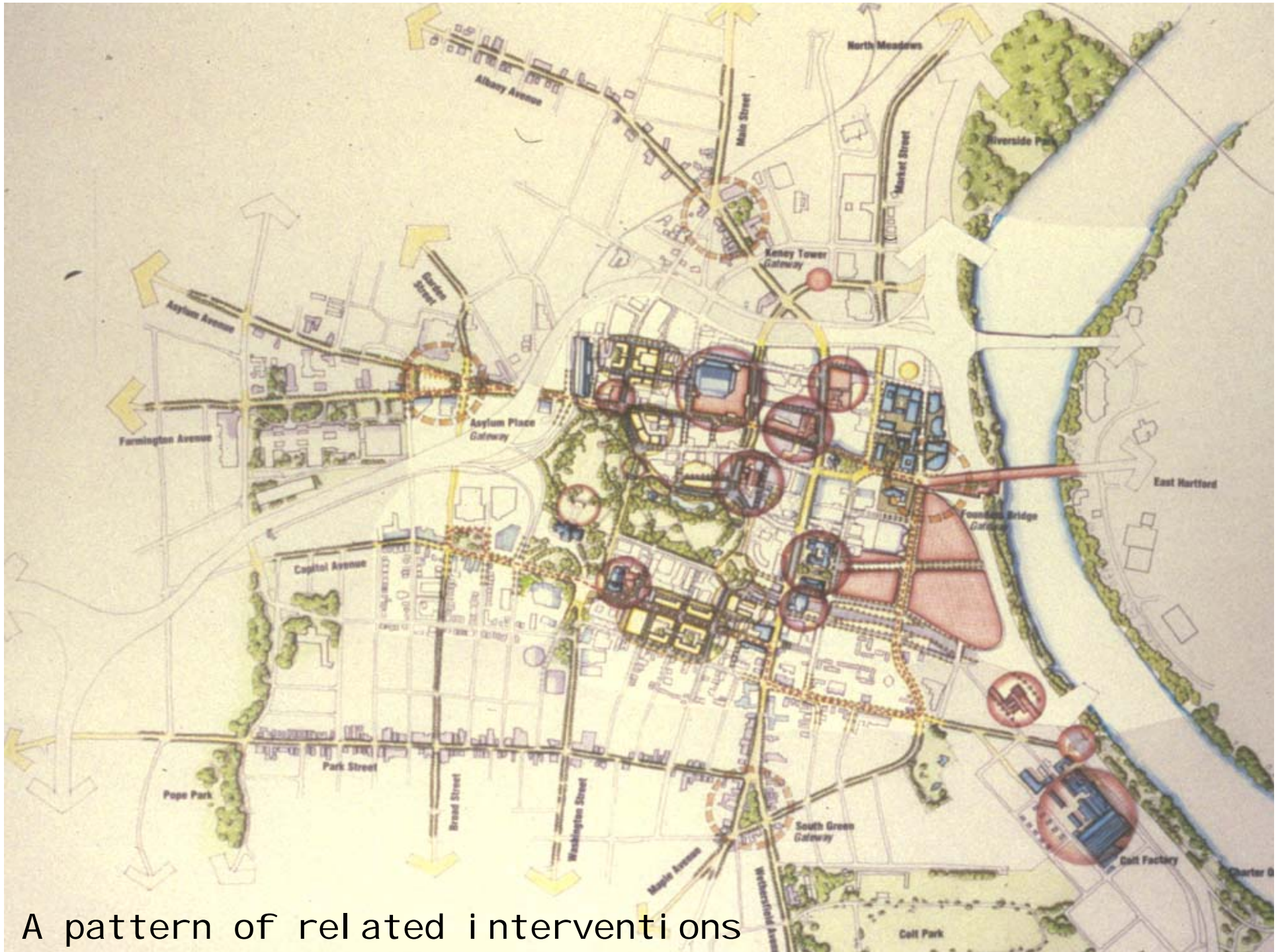
# Hartford 21- renewal of Civic Center



# The Circuit Line







A pattern of related interventions

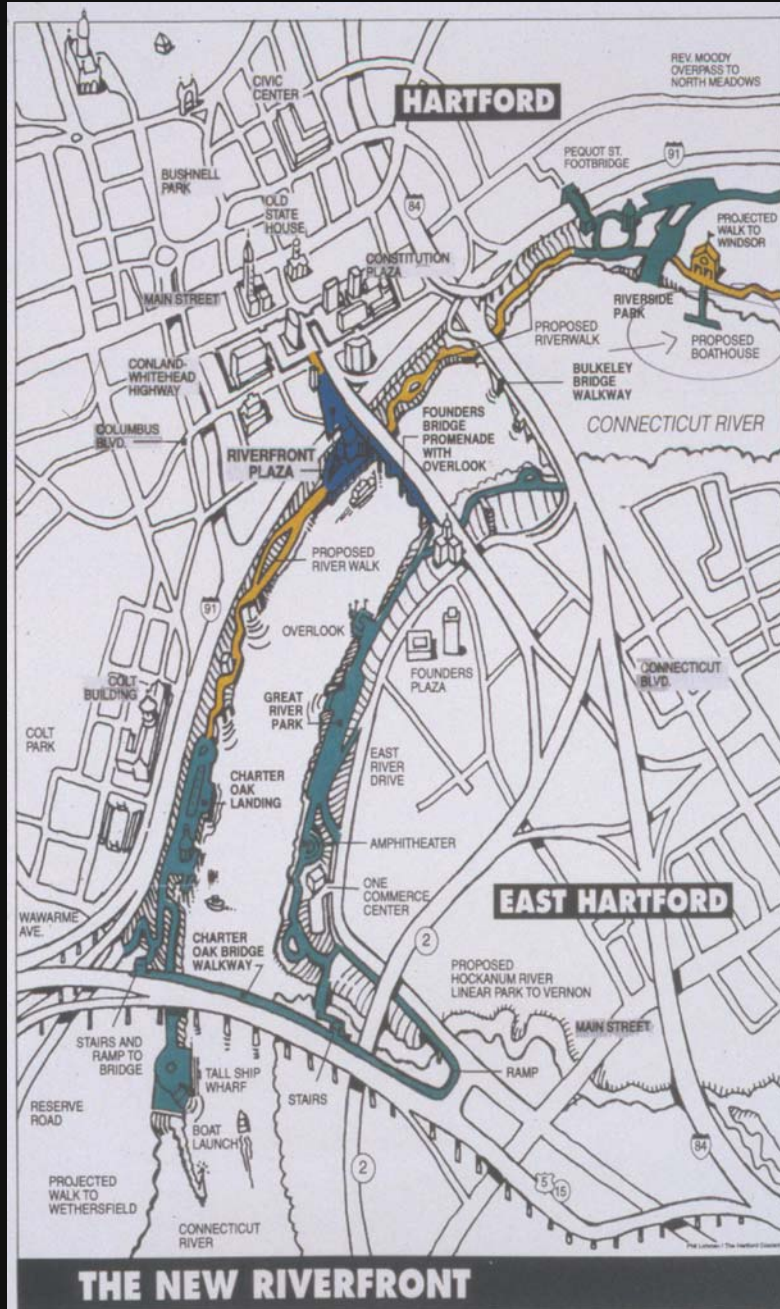


# Reconnecting to the River





# The Founders' Bridge



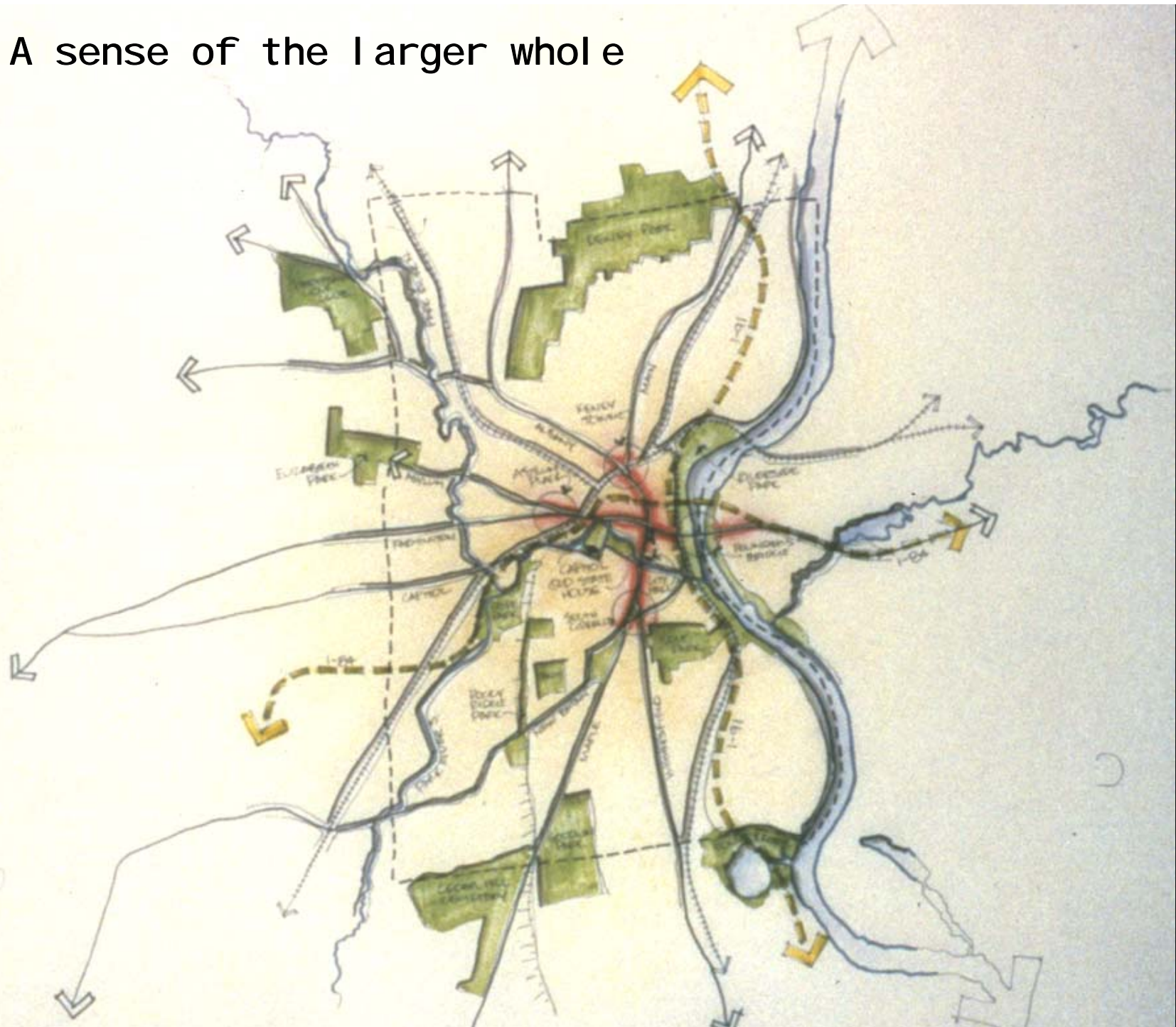
- COMPLETE
- IN CONSTRUCTION
- PLANNED

  
**RIVERFRONT RECAPTURE, INC.**  
 One Hartford Square West  
 Suite 104  
 Hartford, Connecticut  
 06106-1984  
 860 293-0131  
 FAX 860 278-8859



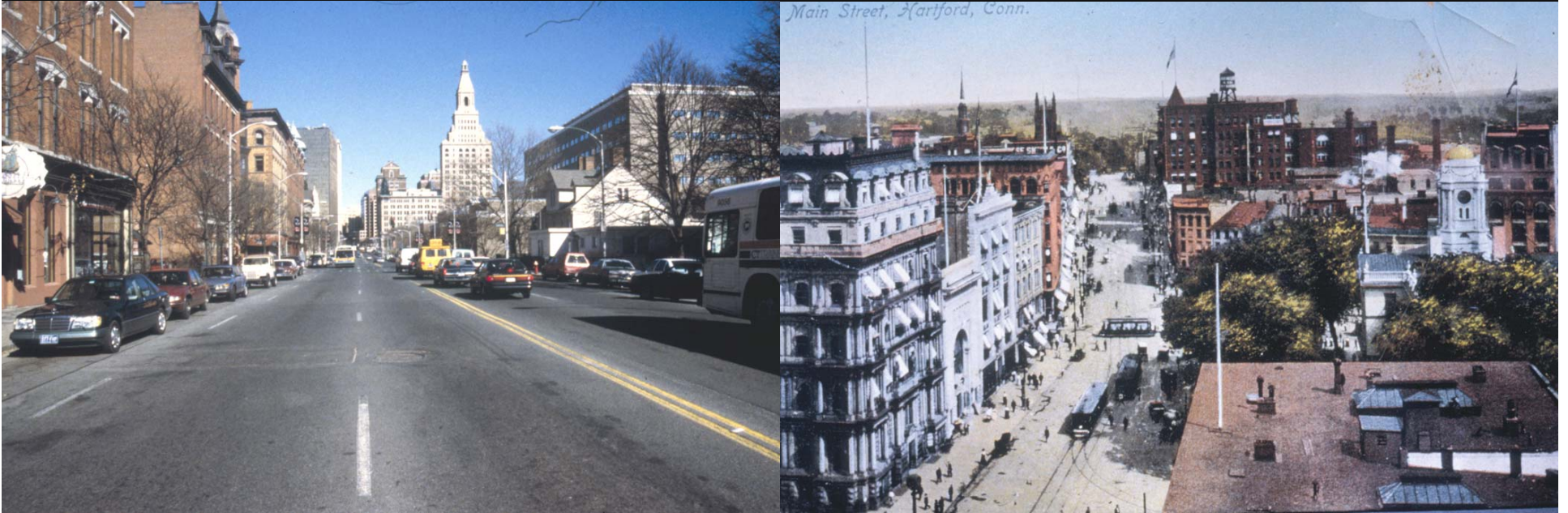


A sense of the larger whole





# Main Street





# Coltsville





# Weathersfield





# Park Street





# Park Street





# Farmington





# Al bany





# South Green



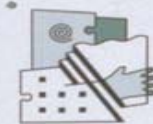


# Interlocking Plans



## **COLLAGE PLAN HARTFORD NEIGHBORHOODS**

**DECEMBER, 1998**



URBAN STRATEGIES INC.



Hartford Rising Star

